

# Inventory Aircraft Specification

---

**D-AEFL**

Boeing 737-400

**Revision  
01**

**Previous Revision Dated  
21.08.2009**

**Owner  
Eheim Flugzeug GmbH & Co. KG Vermietung**

## SPECIFICATION SUBJECT TO VERIFICATION UPON INSPECTION

**TABLE OF CONTENTS**

<b>OPERATOR HISTORY</b> .....	<b>3</b>
<b>GENERAL AIRCRAFT DATA</b> .....	<b>3</b>
<b>ENGINES</b> .....	<b>4</b>
<b>MAINTENANCE</b> .....	<b>6</b>
NOSE LANDING GEAR .....	7
LEFT MAIN LANDING GEAR .....	7
RIGHT MAIN LANDING GEAR .....	7
LEFT WLG .....	7
RIGHT WLG .....	7
<b>FLIGHTDECK &amp; AVIONICS</b> .....	<b>8</b>
LRU INVENTORY AS OF 07.12.2009 .....	8
<b>INTERIOR</b> .....	<b>9</b>
PASSENGER CONFIGURATION .....	9
GALLEYS .....	9
OTHER EQUIPMENT .....	9
IN-FLIGHT ENTERTAINMENT SYSTEM (IFE) .....	10
<b>BRAKES / WHEELS</b> .....	<b>10</b>
<b>PRODUCT ENHANCEMENTS</b> .....	<b>11</b>
MODIFICATIONS .....	11
PLANNED MODIFICATIONS .....	11
<b>LOPA</b> .....	<b>12</b>

**SPECIFICATION SUBJECT TO VERIFICATION UPON INSPECTION****OPERATOR HISTORY**

DATE	OPERATOR	REGISTRATION	COMMENTS
21 <sup>th</sup> of February 1992	Air Berlin GmbH & Co. Luftverkehrs KG	D-ABAD	
23 <sup>th</sup> of April 1997	Futura International	EC-GNZ	

**GENERAL AIRCRAFT DATA**

Manufacture Serial Number	<b>25178</b>
Customer No.	<b>PW 47</b>
Line No.	<b>2199</b>
Date of Delivery	<b>21.02.1992</b>
Engine Type	<b>CFM56 3C-1</b>
Registration number	<b>D-AEFL</b>
Certificate of Airworthiness	
Aircraft Measurement System (English or Metric)	<b>English</b>
Total Airframe Hours (as of xx)	<b>52.508:25 Fh</b> as of 07.12.2009
Total Airframe Cycles (as of xx)	<b>22.701 Cyc</b> as of 07.12.2009
Certified taxi weight (lbs / kg) <sup>1</sup>	<b>150.500 lbs<sup>2</sup> / 68.265 kg</b>
Certified takeoff weight (lbs / kg)	<b>150.000 lbs / 68.038 kg</b>
Certified landing weight (lbs / kg)	<b>124.000 lbs / 56.245 kg</b>
Certified zero fuel weight (lbs / kg)	<b>117.000 lbs / 53.070 kg</b>
Operating empty weight (lbs / kg) <sup>3</sup>	<b>79.076 lbs / 35.868 kg</b>
Fuel capacity (Pounds / Kilograms) <sup>4</sup>	<b>34.215 lbs / 15.518 kg</b>
Fuel Tank Configuration	<b>2Wing, 1 Center</b>
Fuel Qty Indication Units	<b>Kilograms</b>
Passenger Configuration (FC/BC/EC)	<b>0 FC/ 0 BC/ 170 EC</b>
Airstair	<b>Location FWD Left Hand</b>

<sup>1</sup> All Structural Design Weights are taken from Boeing AFM D6-8734.4Y01 Revision 71

<sup>2</sup> Weights in Detail Spec. are indicated in Kilograms and Pounds. 1 pound corresponds to 1 lb, and 1 lb (US) = 0,45359237 kg, but 1 lb (UK) = 0,45359373 kg

<sup>3</sup> Reference is Boeing AFM D6-8734.4Y01 Revision 71

<sup>4</sup> Reference is Boeing AFM D6-8734.4Y01 Revision 71

**SPECIFICATION SUBJECT TO VERIFICATION UPON INSPECTION****ENGINES**

<b>ENGINES</b>	<b>Installed Engines</b>
Date of Data	07.12.2009
<b>Position 1</b>	<b>CFM56-3C1</b>
Serial No.	<b>727380</b>
Total Time (TT) / TC	<b>44.598:39 / 18.639</b>
Time Since Last Scheduled Visit (TSLSV) / CSLSV	<b>3.968 / 1.772</b>
Lowest LLP	<b>Conical Support</b>
LLP Time Remaining (LLP TREM) / CREM	<b>(N/A) / 3.807</b>
<b>Position 2</b>	<b>CFM56-3C1</b>
Serial No.	<b>856471</b>
TT / TC	<b>45.335:48 / 19.728</b>
TSLSV / CSLSV	<b>3 / 1</b>
Lowest LLP	<b>Stg 2/3/4 LPT Disk Conical Support</b>
LLP Time Remaining (LLP TREM) / CREM	<b>(N/A) / 5.272</b>

<b>ENGINES</b>	
<b>Position 3</b>	<b>N/A</b>
Serial No.	
Total Time (TT) / TC	
Time Since Last Scheduled Visit (TSLSV) / CSLSV	
Lowest LLP	
LLP Time Remaining (LLP TREM) / CREM	
<b>Position 4</b>	<b>N/A</b>
Serial No.	
TT / TC	
TSLSV / CSLSV	
Lowest LLP	
LLP Time Remaining (LLP TREM) / CREM	

*SPECIFICATION SUBJECT TO VERIFICATION UPON INSPECTION***APU**

<b>APU</b>	
Date of Data	07.12.2009
Type	<b>380428-10-1</b>
Model No.	<b>GTCP 85-129H</b>
Serial No.	<b>P-12104C</b>
Total Time / Total Cycles <sup>5</sup>	<b>18.773 APU Hrs/ unknown Cyc</b>
Hours Since Last Visit	<b>0 (26.10.2006 by SRT)</b>
Lowest LLP	<b>N/A<sup>6</sup></b>
Cycles to LLP	<b>N/A</b>
Hours to next major check	<b>23.773 APU Hrs<sup>7</sup></b>

<sup>5</sup> Reference is APU Log Book 10.11.2006

<sup>6</sup> Reference is Confirmation from Manufacturer that there is no LLP on this APU

<sup>7</sup> Interval for Hot Section Inspection is 5.000 APU Hrs.

*SPECIFICATION SUBJECT TO VERIFICATION UPON INSPECTION***MAINTENANCE**

<b>Maintenance<sup>8</sup></b>	
Date of Data	<b>07.12.2009</b>
<b>A Check</b>	
Interval	<b>250 Fh</b>
Last / Next Type of A-Check	<b>N/A / A1</b>
Next Due	<b>52758:25</b>
<b>B Check</b>	
Interval	<b>N/A</b>
Next Due	<b>N/A</b>
<b>C Check</b>	
Interval	<b>4000 Fh</b>
Last / Next Type of C-Check	<b>6C-Check / 1C-Check</b>
Next Due	<b>56508:25</b>

<sup>8</sup> Reference is the Maintenance Schedule ("Instandhaltungsprogramm", IHP), Document Number: ASE-MS-B737-400EHM Revision 1

*SPECIFICATION SUBJECT TO VERIFICATION UPON INSPECTION***LANDING GEAR**

<b>Landing Gear</b>	<b>Actual installed</b>
Date of Data <sup>9</sup>	<b>07.12.2009</b>
<b>Nose Landing Gear</b>	
Part Number	<b>65-73762-21</b>
Serial No.	<b>T3409P2199</b>
Interval	<b>8C or 10 Yrs, whichever comes first</b>
Total hours / cycles	<b>N/A / 22.701Cyc</b>
TSO / CSO	<b>N/A / 0 Cyc</b>
Time / cycles to Next Overhaul	<b>12.10.2019 / 21000Cyc</b>
<b>Left Main Landing Gear</b>	
Part Number	<b>65-73761-121</b>
Serial No.	<b>MCO4331P2199</b>
Interval	<b>8C or 10 Yrs, whichever comes first</b>
Total hours / cycles	<b>N/A / 22.701 Cyc</b>
TSO / CSO	<b>N/A / 0 Cyc</b>
Time / cycles to Next Overhaul	<b>12.10.2019 / 21000Cyc</b>
<b>Right Main Landing Gear</b>	
Part Number	<b>65-73761-122</b>
Serial No.	<b>MCO4332P2199</b>
Interval	<b>8C or 10 Yrs, whichever comes first</b>
Total hours / cycles	<b>N/A / 22.701 Cyc</b>
TSO / CSO	<b>N/A / 0 Cyc</b>
Time / cycles to Next Overhaul	<b>12.10.2019 / 21000Cyc</b>
<b>Left WLG</b>	
Serial No.	<b>N/A</b>
Interval	
Total hours / cycles	
TSO / CSO	
Time / cycles to Next Overhaul	
<b>Right WLG</b>	
Serial No.	<b>N/A</b>
Interval	
Total hours / cycles	
TSO / CSO	
Time / cycles to Next Overhaul	

<sup>9</sup> Data References are taken from Landing Gear Overhaul Report Oct.2009 by AEM Ramsgate,

*SPECIFICATION SUBJECT TO VERIFICATION UPON INSPECTION***FLIGHTDECK & AVIONICS**

LRU Inventory as of 07.12.2009

SYSTEM	QTY	PART NUMBER	SERIAL NUMBER 1	SERIAL NUMBER 2	SUPPLIER
ADF Receiver	2	777-1492-005	17963	17975	Collins
Air Data Computer (Digital)	2	4061100-901	89080667	91111220	Honeywell
DME Interrogator	2	622-2921-006	13588	3272	Collins
Flight Mgmt Computer	1	176200-01-01	002737		
Full Colour Display (Symbol Generator)	2	622-9436-101	1623	196YB	
EFIS CRT Display Unit	2	622-7998-013			Collins
EFIS CRT Display Unit	2	622-7999-013			Collins
Enhanced Ground Proximity Warning	1	965-0976-020-212	15547		Honeywell
ILS Receiver (VHF Nav)	2	822-0761-001	12953	9159	Collins; VHF Nav
Inertial Reference Unit	2	HG1050AD05	4413	5009	Honeywell
Radio Altimeter	2	622-3890-021	6085	8485	Collins
SELCAL Decoder	1	N1401C	706CSE0013		
TCAS	1	066-50000-2221	TPA81A-12049		
Transceiver, HF	2	622-5377-001	604	2289	
Transceiver, VHF	2	822-1045-301	9042	8973	Collins
Weather Radar	1	622-5132-109	2863		Collins
Weather Radar Control Panel	1	622-5129-105	1697		Collins
Auto Throttle	1	755SUE2-4			Smith
AFCS	2	40S1600-913			Sperry
Yaw Damper	1	4084042-911			Sperry
Voice Recorder System	1	980-6005-076			Sundstrand
ELT	1	B-406-4			Artex
Flight Data Acquisition Unit	1	2233000-815-1			Teledyne Controls
Flight Data Rec. System	1	980-4100-DXUN			Sundstrand
Systems Display	1	311EDP2-1			Smith

**SPECIFICATION SUBJECT TO VERIFICATION UPON INSPECTION****INTERIOR****Passenger Configuration<sup>10</sup>**

\_\_\_ passenger, \_\_\_ class (\_\_\_ F/C, \_\_\_ B/C, \_\_\_ E/C)

Class	Qty	Pitch (in.)	Split (%)	Seat Manuf.	Seat Type	Basic P/N	Lav Qty & Ratio
First	0	---	---	---	---	---	---
Business	0	---	---	---	---	---	---
Economy	170	29"		Weber		Double Seats, Triple Seats	3

**Galleys**Manufacturer: **Weber / Driessen**

Basic P/N:

DESCRIPTION	G1	G2	G3	G7
Assy P/N	836201-403	101002-601	836202-407	
Manufacturer	Weber	Driessen	Weber	
Location	FWD RH (front)	FWD RH (rear)	AFT	
Power				
Wet	Yes	No	Yes	

**Other Equipment**

Type	Qty	Manufacturer	Model / Pn.
Boiler	3	LA Rumbold Ltd	HE62190 Mod2 1 SS1B
Container	10	Driessen Aircraft	DLH 294-072
Crash Axe	1	Auld	42D8331
Esc Slides(Door)	2	Air Cruisers Co	D31354-433
Esc Slide	2	Air Cruisers Co	D31354-433
Esc Slide	2	Air Cruisers Co	D31591-462
Halon Ext.	3	Kidde	898052
Hand Megaphone	2	ACR Electronics	ACR/EM-1A
Hot Cup	2	Driessen Aircraft	DHL549-017
Life Jacket Crew	8	Air Cruisers Co	D21343-101
Life Jacket Pax	170	Air Cruisers Co	D21343-101
Oven	5	LA Rumbold Ltd	67251

<sup>10</sup> Reference is Futura LOPA and Weber CMM, 25-22-08

**SPECIFICATION SUBJECT TO VERIFICATION UPON INSPECTION**

PBE	5	Draeger	E28180
Portable Oxy bottle	6	Scott	5500A1ABF23A
Trolley	4	Driessen Aircraft	DLH 1072-020-Full
Trolley	3	Driessen Aircraft	DLH 1085-017-Half
Trolley	4	Driessen Aircraft	DLH 1085-018-Half
Water Ext.	1	Walter Kidde	892480
Video	1	Sony Transcom	7430216-001 VHS
Audio	1	Matsushita	RDAX7308/-01

**In-flight Entertainment System (IFE)**

Class	Aisle Monitors	LCD's	Projector
F/C	---	---	---
B/C	---	---	---
E/C	CRT's	---	---

**Brakes / Wheels**

Type	Manufacturer	Part No.
Brake	BF Goodrich	2-1474-7
Main Wheel	Bridgestone/Dunlop	3-1439-6
Nose Wheel	Dunlop	3-1438-1

*SPECIFICATION SUBJECT TO VERIFICATION UPON INSPECTION***PRODUCT ENHANCEMENTS**

8.33 Khz Spacing	YES
FM Immunity	YES
RVSM	YES
EGPWS	YES
TCAS (I or II)	TCAS II
SELCAL	YES
GPS	NO
FANS	NO
RNP-5/-10	RNP-5
Noise (Stage Compliance)	Stage III

**Modifications**

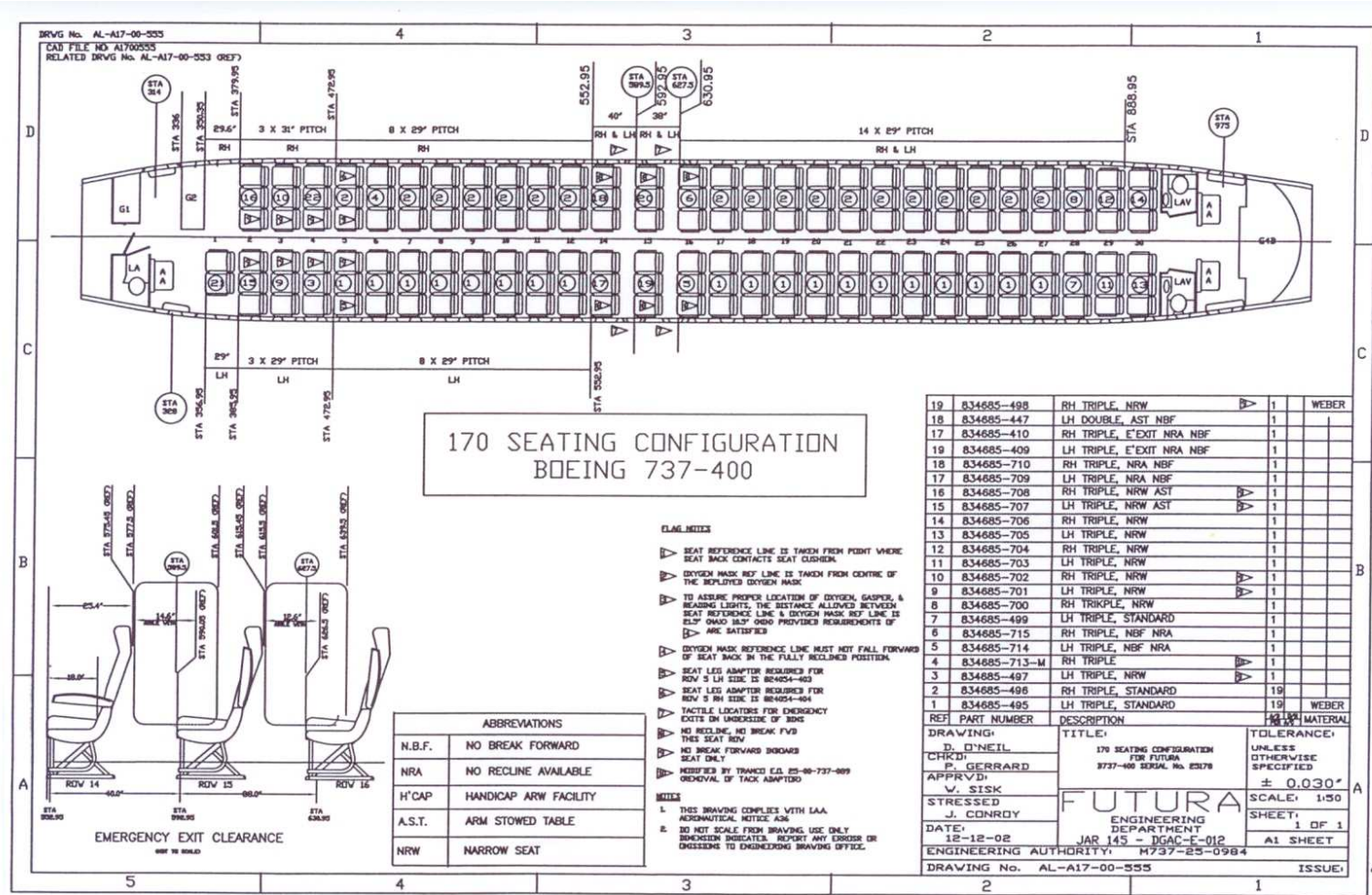
STC# SA4205NM-D:	G2 Galley Installation – Driessen Aircraft Interior
STC# SA5135NW:	Emergency Exit Light Relocation – Flight Structures
STC# SA5135NM:	Installation of 14" Fixed Monitor – FSI
STC# SA5056NM:	Audio Entertainment System Installation – B/E Avionics
STC# SA5135NM:	Installation of 14" Retract Monitor – FSI
STC# SA5939NM:	Interior Arrangement – Tramco Inc.
STC# SA3992NM:	Installation of an Auxiliary Fuel System – Aftermarket Technologies Inc.
STC# SA3992NM:	Removal of Auxiliary Fuel System – Aftermarket Technologies Inc. I/A/W AD 2008-12-03

**Planned Modifications**

NON

SPECIFICATION SUBJECT TO VERIFICATION UPON INSPECTION

LOPA



Layout of Passenger Configuration of Futura International B737-400

*SPECIFICATION SUBJECT TO VERIFICATION UPON INSPECTION*

**END OF DOCUMENT**